

AFRICAN-AMERICAN ARCHAEOLOGY

NEWSLETTER OF THE AFRICAN-AMERICAN ARCHAEOLOGY NETWORK

Number 20

Page 1

Late Winter 1998

Problematical Glass Artifacts from Newton

Plantation Slave Cemetery, Barbados¹

Jerome S. Handler

The Virginia Foundation for the Humanities, Charlottesville, & The Center for Archaeological Investigations, Southern Illinois University

In the early 1970s, archaeological research in several plantations addressed a variety of issues in the sociocultural life of early Africans and their descendants in Barbados, once England's wealthiest and most populous New World colony; this research ultimately focused on the Newton plantation slave cemetery. Over the years, the Newton research has been extensively reported, and is well known to scholars of the early African Diaspora in the Caribbean². Although the 104 burials recovered from Newton represent a small percentage of the total number interred at the cemetery, there was a diverse artifactual inventory that included coffin hardware, clay pipes, pottery, metal jewelry and knives, metal and bone buttons, and many different types of glass beads. Some of these artifacts are unique to New World African descendant sites (see Handler 1997).

This paper focuses on two virtually identical small glass objects of apparent European manufacture. Each was found associated with a different burial. Although the objects were excavated in May 1973 and published in 1978 (see Handler and Lange 1978: 119-122, 306 for more details on the objects and their burial contexts), as far as I am currently aware no similar objects have been reported from other African descendant sites.

Both objects are of translucent glass that, relative to modern glass, is unusually heavy or hard; they are virtually identical in size, shape, weight, and number of facets. Roughly conical in shape, they have circular flat bases and faceted sides (Fig. 1). The facets (six in the center, 12 on the outside) are irregularly and crudely shaped. Under magnification (100x), they show no signs of grinding or chipping, and air bubbles suggest they were pressed or mold-made. The objects are very small (3.6 mm high and about 8.0 mm in diameter at the base) and light (one weighs 0.3368 grams, the other 0.3813 grams).

The objects were associated with two different, albeit roughly contemporaneous, coffinless burials located relatively close to one another in the same 3-meter square excavation unit (see Handler and Lange 1978: 117-123). The burials were probably interred sometime in the 18th century.

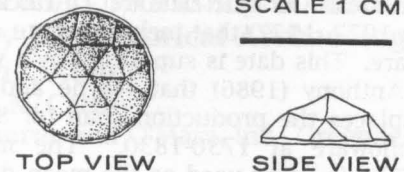


Figure 1: Two identical glass objects were recovered from burial contexts at Newton Plantation.
continued page 5

From the Editor: WARNING, WARNING!

Be WARNED: If you have not paid your 1998 subscription, this will be your last issue of the newsletter. The mailing label indicates the last year paid according to my records. CHECK IT! Be sure to contact me ASAP concerning any discrepancies.

Thanks for the words of encouragement and support so many of you have offered in writing or in person. Keep the submissions coming. Look for Issue 21 in May.

Contents of Issue 20

| | |
|--|----|
| Problematical Glass Artifacts from Newton Plantation Slave Cemetery, Barbados..... | 1 |
| From the Editor: WARNING, WARNING!..... | 1 |
| Comment on the Inappropriateness of a Proposed Mean Ceramic Date (1780) for South Carolina Colonoware..... | 2 |
| "To Witness the Past: African-American Archaeology in Alexandria": An Exhibit..... | 3 |
| Foodways: The African-American Archaeology Workshop at the 1998 Society for Historical Archaeology Meet- ing, Atlanta..... | 3 |
| Results of the 1997 Excavations at the Brown Lodge/Caldwell Pottery Site (23SA451), Arrow Rock, MO..... | 4 |
| Internet Resources..... | 8 |
| African-American and Quaker Pioneers in East Central Indiana..... | 9 |
| Book Reviews and Notes..... | 9 |
| News and Announcements..... | 11 |

Problematical Glass Artifacts from Newton Plantation Slave Cemetery, Barbados
continued from page 1

Burial 60 was an older female. When her leg bones were removed, a 4.5 cm pipe stem section was found close to the right knee. One of the glass objects was found next to this pipe stem (see Handler and Lange 1978:119, fig. 13). The pipe stem fragment was clearly not the pipe's original mouthpiece, and was not attached to a bowl or additional stem fragments; that is, no whole pipe was associated with Burial 60--as occurred in the other glass object described below. Although the Burial 60 object appears to have been closely associated with the pipe fragment, the fragment may have been disturbed after interment; thus, the object's association with the pipe stem may have been accidental. However, the other glass object was more certainly associated with a pipe.

Burial 55 was an older male interred with two complete long-stemmed white clay pipes, dating roughly 1710-1750 (based on bore-stem diameter; median bowl date was 1705; a maker's mark suggested 1700-1740; see Handler and Lange 1978: 123, 255, 270). One of the pipes was found over the chest, the other by the pelvis; a glass object was found lying, apex down, exactly at the mouthpiece end of the pipe by the pelvis (Figs. 2 and 3; also, see Handler and Lange 1978: 120, fig. 14; 259, fig. 34). Both the pipe and glass object were apparently undisturbed since the original interment.

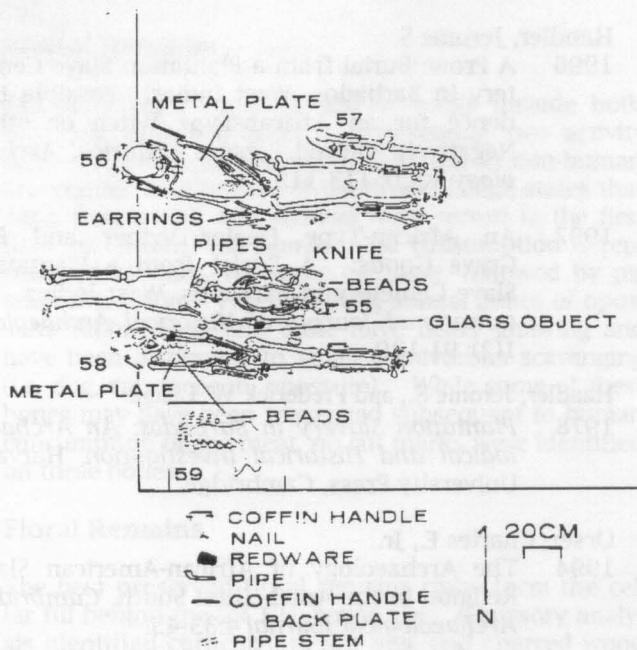


Figure 2: Plan indicating location of the glass object associated with Burial 55.

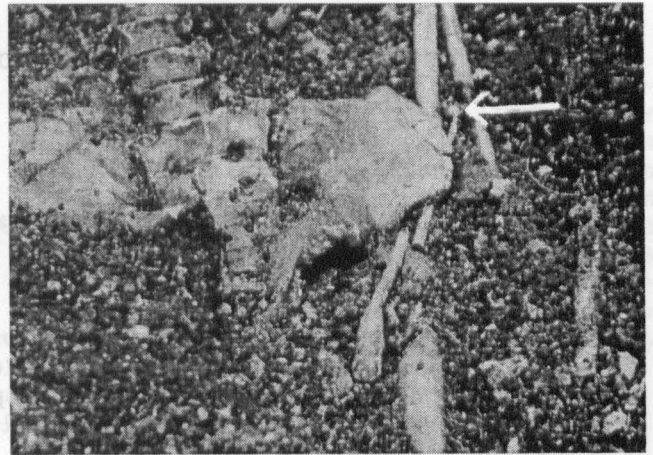


Figure 3: *In situ* location of glass object, Burial 55.

Although the objects were almost certainly manufactured in Europe, their original function is uncertain. European-manufactured glass beads were associated with both burials: Burial 60 had about 290 of various types around the neck, while 8 were found with Burial 55. But the glass objects were not beads; they were not perforated and were not associated with other beads.

Ivor Noel Hume (personal communication, Oct. 1975) provisionally suggested the objects may have "been from an item of paste jewelry and would have originally been backed with metallic foil or perhaps by colored paper. [They] could come from a finger ring or possibly from a shoe buckle"-- perhaps dating from the second half of the 18th century.

In January 1998, over twenty years later, several curators in the Department of Metalwork at London's Victoria and Albert Museum (Clare Phillips, pers. comm., Jan. 1998) gave the following opinion after personally examining one of the objects: "The object is clearly shaped to imitate a rose cut diamond. It is therefore of a kind found in the jewelry--perhaps a buckle or brooch--of the late 17th to late 18th century . . . It is odd that no trace of a mount has survived." The curators had "no means of dating it more precisely," and "although England was famous for making glass stones for jewelry, so too was Paris." Since Barbados had such an intimate long-standing trade and colonial relationship with England/Britain, it is assumed the objects are of English/British, not French, origin.

How the enslaved at Newton originally obtained these objects is unknown, and neither burial had associated rings, shoe buckles, brooches, etc.; thus, the use of the objects was secondary. The secondary use of European-manufactured items recovered from African descendant sites is now well known in historical archaeology, and some of these

continued page 6

Comment on the Inappropriateness of a Proposed Mean Ceramic Date (1780) for South Carolina Colonoware

continued from page 2

South, Stanley

1977 *Method and Theory in Historical Archaeology*. Academic Press, New York.

Wayne, Lucy B., and Martin F. Dickinson

1990 *Four Men's Ramble: Archaeology in the Wand Neck, Charleston County, South Carolina*. Report prepared for the Dunes West Development Corporation. Southarc, Inc., Gainesville, Florida.

1996a *Starvegut Hall Plantation, Charleston County, South Carolina*. Report prepared for the Dunes West Development Corporation. Southarc, Inc., Gainesville, Florida.

1996b *The Parsonage Tract, Charleston County, South Carolina*. Report prepared for the Dunes West Development Corporation. Southarc, Inc., Gainesville, Florida.

1996c *Ruins of an Old Settlement: Archaeological Data Recovery at 38CH1082, Charleston County, South Carolina*. Report prepared for the Dunes West Development Corporation. Southarc, Inc., Gainesville, Florida.

Problematical Glass Artifacts from Newton Plantation Slave Cemetery, Barbados

continued from page 5

artifacts may have been modified by slaves and used in their own cultural contexts, perhaps following West African patterns (cf. Handler 1997:122 and references cited therein; Orser 1994; Wilkie 1997). Although the two objects were closely associated with clay pipes (one case more certain than the other), there is no historical or archaeological evidence from Barbados or elsewhere that the objects had any functional relationship to pipes or pipe smoking. It is therefore more likely that they were placed with the burials because of their personal value to the decedents and/or had some other role in slave mortuary beliefs. However, from the early 1970s - when the objects were excavated and originally analyzed - to the present, I cannot offer an explanation or suggestion for their role in slave culture: the use or meaning of these objects among Barbadian slaves remains problematical.

I bring these objects to the attention of this *Newsletter's* readership in the hope that someday similar ob-

jects may be found at other archaeological sites or contexts; perhaps with a wider data base we will be able to resolve another small enigma in the lives of early Africans and their descendants in the Americas.

Notes

1: A version of this paper was presented at the 1998 SHA meeting in Atlanta. In the 1970s, Frederick Lange played a crucial role in the archaeological research strategies and data interpretation while Crawford Blakeman and Robert Riordan actually excavated the objects discussed here; I rely on their field notes for descriptive materials on the objects in situ. Jen Ho Fang (X-Ray and Optics Laboratory, Southern Illinois University), using a refractive index determination, initially identified the glass composition and weighed the objects, and John Richardson (Office of Scientific Photography, Southern Illinois University) provided additional details through microscopic analysis. I am also grateful to Clare Phillips, Richard Edgcumbe, Anthony North, and Tessa Murdoch of the Victoria and Albert Museum, London for their assistance in identification. One of the objects is in the Barbados Museum (with other Newton artifacts); the other is in my possession, pending further investigation, and subsequent delivery to the Museum.

2: Principally, Handler and Lange 1978; more recent publications, which cite many of the earlier ones in archaeology, history, and bioanthropology, include Handler 1996, 1997.

References Cited

Handler, Jerome S.

1996 A Prone Burial from a Plantation Slave Cemetery in Barbados, West Indies: Possible Evidence for an African-Type Witch or other Negatively Viewed Person. *Historical Archaeology* 30(3): 113-119.

1997 An African-Type Healer/Diviner and His Grave Goods: A Burial from a Plantation Slave Cemetery in Barbados, West Indies. *International Journal of Historical Archaeology* 1(2): 91-130.

Handler, Jerome S., and Frederick W. Lange

1978 *Plantation Slavery in Barbados: An Archaeological and Historical Investigation*. Harvard University Press, Cambridge.

Orser, Charles E., Jr.

1994 The Archaeology of African-American Slave Religion in the Antebellum South. *Cambridge Archaeological Journal* 4:33-45.

Wilkie, Laurie A.

1997 Secret and Sacred: Contextualizing the Artifacts of African-American Magic and Religion. *Historical Archaeology* 31(4):81-106.